

## 4D - USING 3D MODELING AND ANIMATION FROM DESIGN TO PUBLIC INVOLVEMENT

The use of Lidar, Advanced 3D models and Animation tools are not only changing the way we design, but also changing the way in which we present a project to the Public.



# 4D - USING 3D MODELING AND ANIMATION FROM DESIGN TO PUBLIC INVOLVEMENT



Courtesy of:  
Marvel Film Guides

## 4D - USING 3D MODELING AND ANIMATION FROM DESIGN TO PUBLIC INVOLVEMENT

- ▶ Preparation of 3D Modeling from FDOT District 7.
- ▶ Lidar Data – Capture – of a Historic Church Building – SR 52 (Courtesy of GPI).
- ▶ Rendered Point Cloud Data of Historic Church.
- ▶ Final Infraworks Model for SR 52 (District 7), and also Memorial Bridge (District 2)
- ▶ Final Animation in Lumen<sup>rt</sup>
- ▶ Live Cube Files – For Client (FDOT District 7 PM) Review and Interaction
- ▶ SR 52 - Public Involvement Meeting July 2018.
- ▶ Other forms of Public Interaction – QR codes with Video Streaming (YouTube etc.)
- ▶ Other Project Models and Renderings
- ▶ Q and A....

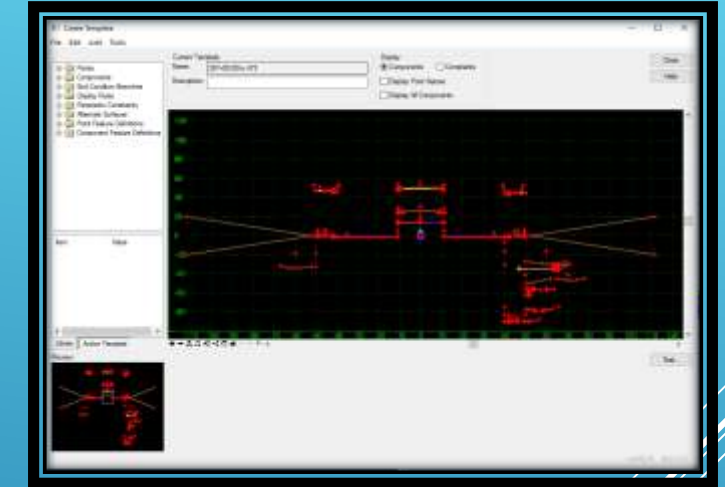




# 4D - USING 3D MODELING AND ANIMATION FROM DESIGN TO PUBLIC INVOLVEMENT

- ▶ 3D models from FDOT District 7 and District 2
- ▶ Other 2D elements- signing and pavement markings, signals
- ▶ Model preparation for Rendering and Animation

(Bentley MS – FDOTSS4)



Memorial Bridge  
(Infraworks Model)

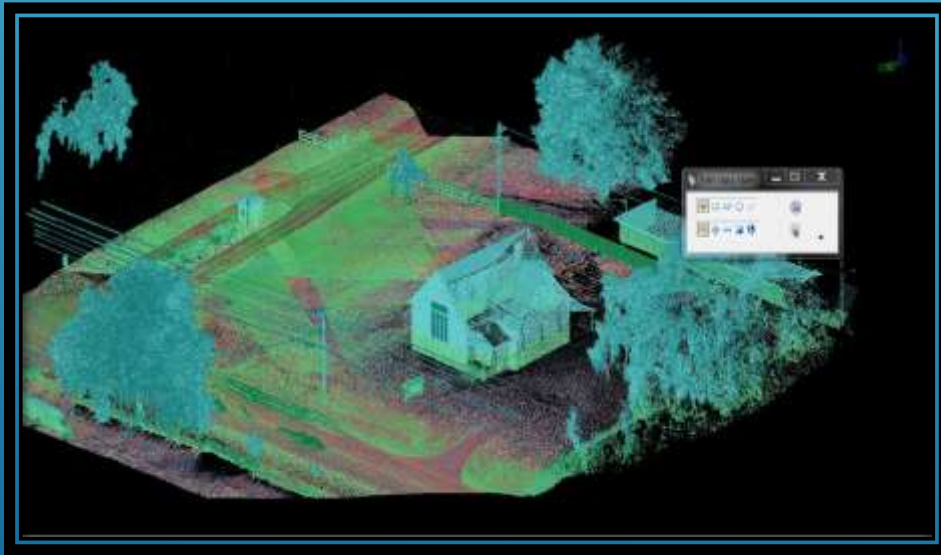


SR 52 Models  
(Bentley MS – FDOTSS4)



## 4D - USING 3D MODELING AND ANIMATION FROM DESIGN TO PUBLIC INVOLVEMENT

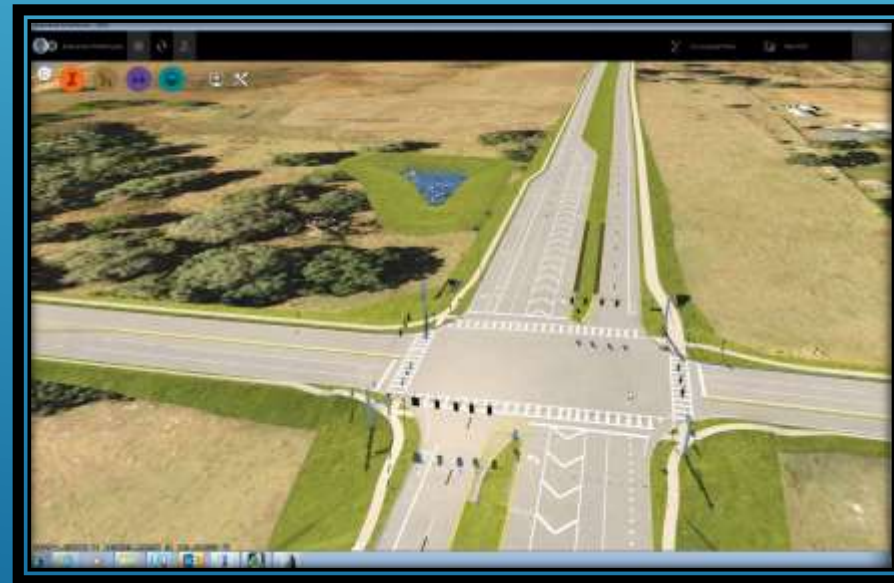
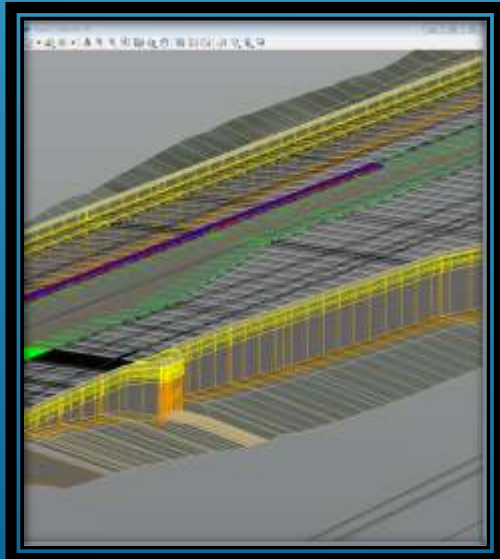
- ▶ Lidar Data – Capture – of a Historic Church Building – SR 52 (Courtesy of GPI).
- ▶ Rendered into InfraWorks along with other 3D objects





# 4D - USING 3D MODELING AND ANIMATION FROM DESIGN TO PUBLIC INVOLVEMENT

- From Design using OpenRoads (Bentley), InfraWorks (Autodesk), to Animation using Lumenrt (Bentley).



# 4D - USING 3D MODELING AND ANIMATION FROM DESIGN TO PUBLIC INVOLVEMENT



SR 52 Rendering  
with Animation  
LumenRT

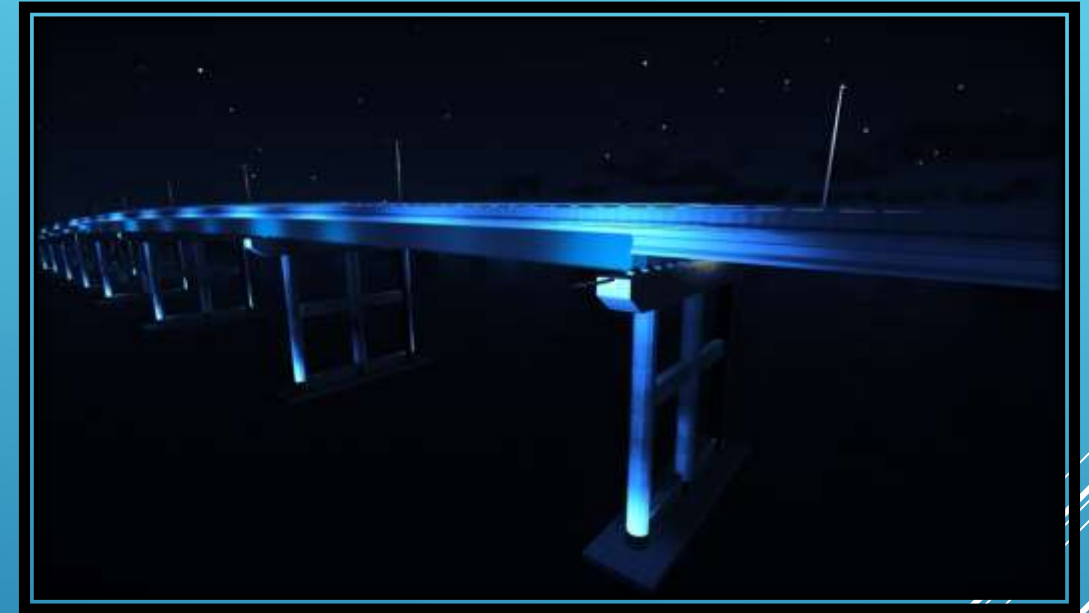
Memorial Bridge  
Lighting Rendering  
LumenRT



# 4D - USING 3D MODELING AND ANIMATION FROM DESIGN TO PUBLIC INVOLVEMENT

## ► Live Cube Files in Lumenrt

- Executable file which can be used by client
- Simple tools for Animation navigation.
- Example – SR 52 and Memorial Bridge





# 4D - USING 3D MODELING AND ANIMATION FROM DESIGN TO PUBLIC INVOLVEMENT

- ▶ Final Animation for the Public Involvement Meeting created optimum Public Interaction and feedback.
- ▶ A Better Virtual Design controls the costs – of both time and \$\$\$.
- ▶ Virtual interaction – using technology to enhance the relationship between the Public and the Department.

# 4D - USING 3D MODELING AND ANIMATION FROM DESIGN TO PUBLIC INVOLVEMENT

## ► SR 52 Public Involvement Meeting



# 4D - USING 3D MODELING AND ANIMATION FROM DESIGN TO PUBLIC INVOLVEMENT

**QR codes** – another example of a way to promote Public interaction.



QR Code  
Memorial Bridge  
Lighting

QR Code  
SR 52 Design Project





# 4D - USING 3D MODELING AND ANIMATION FROM DESIGN TO PUBLIC INVOLVEMENT

Other Project Models and Animation

## Seawall Renderings

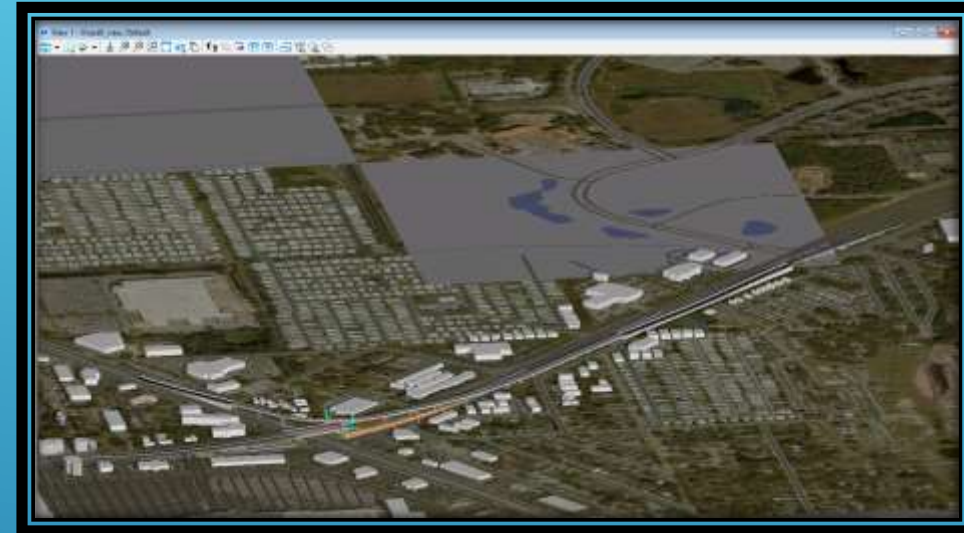


Chain Railing created with Trimble SketchUp

# 4D - USING 3D MODELING AND ANIMATION FROM DESIGN TO PUBLIC INVOLVEMENT

## Flyover Modeling

Utilizing AutoDesk InRoads, Bentley ORD  
(OpenRoads Designer), OBM (OpenBridge Modeler)



# 4D - USING 3D MODELING AND ANIMATION FROM DESIGN TO PUBLIC INVOLVEMENT

► Time for Questions?



# 4D - USING 3D MODELING AND ANIMATION FROM DESIGN TO PUBLIC INVOLVEMENT

## ► Minimum Hardware needs for 3D Rendering and animation

- i7 processors
- P-5000 Graphics Card with 16GB ram.

Items	Details
Quadro P5000	Memory interface: 256-bit Memory bandwidth: 192.19 GB/s Total available graphics ... 32707 MB Dedicated video memory: 16384 MB GDDR5 System video memory: 0 MB Shared system memory: 16323 MB Video BIOS version: 86.04.67.00.0A IRQ: Not used Bus: PCI Express x16 Gen3

### Device specifications

#### HP ZBook 17 G4

Device name	LUS340863
Processor	Intel(R) Core(TM) i7-7820HQ CPU @ 2.90GHz 2.90 GHz
Installed RAM	32.0 GB (31.9 GB usable)
Device ID	586D84E1-B8A4-4DDB-9761-935E69063D8D
Product ID	00329-00000-00003-AA779
System type	64-bit operating system, x64-based processor
Pen and touch	No pen or touch input is available for this display